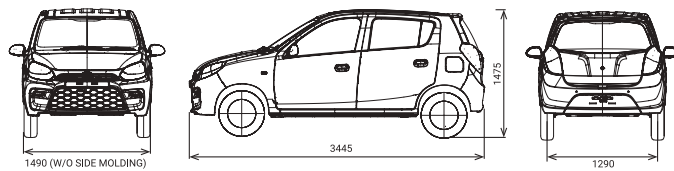


Specifications Sheet		
Dimensions		
Overall Length		3445 mm
Overall Width		1490 mm (Without side molding)
Overall Height		1515 mm (With side molding)
Wheelbase		1475 mm (Unladen)
Tread	Front	2360 mm
	Rear	1295 mm
Turning Radius		1290 mm
		4.6 m
Weight		
Kerb Weight (in kg)	STD / STD (O)	730 / 732
	LXi / LXi (O)	755 / 757
	LXi CNG/ LXi CNG (O)	845 / 850
	VXi / VXi+	762
Gross Vehicle Weight (in kg)		1185
Engine		
Swept Volume		796 cc
Engine Type		F8D
No. of Cylinders		3
No. of Valves		12
Maximum Power	Petrol Variant	35.3 kW @ 6000 rpm
	CNG Variant	35.3 kW @ 6000 rpm (Petrol mode) 30.1 kW @ 6000 rpm (CNG mode)
Maximum Torque	Petrol Variant	69 Nm @ 3500 rpm
	CNG Variant	69 Nm @ 3500 rpm (Petrol mode) 60 Nm @ 3500 rpm (CNG mode)
Transmission		5 Speed MT
Suspension System		
Front		Mac Pherson Strut
Rear		3-Link Rigid Axle Suspension
Capacity		
Seating	5 Persons (Petrol Variant)	4 Persons (CNG Variant)
Fuel Tank	Petrol Variant	35 L (Petrol)
	CNG Variant	35 L (Petrol)
		60 L (CNG) (Water Equivalent Filling Capacity)
Tyres		
Tyre Size		145/80 R12 (Tubeless)
Brakes		
Front		Disc
Rear		Drum

Colours of Pride



Dimensions (in mm)



*All variants are BSVI versions except LXi CNG and LXI(O) CNG which are BSVI versions. **Non-Metallic colour.
 * STD and STD (O) are only available in Silky Silver and Solid White.

Features List						
	STD	STD (O)	LXi / LXI (CNG)	LXi (O) / LXI (O)(CNG)	VXi	VXi+
Exterior						
Body Coloured Bumpers			✓		✓	✓
Body Coloured Outside Door Handles	✓		✓		✓	✓
Wheel Covers	Center Cap		Full		Full	Full
Body Side Molding					✓	✓
Interiors						
Dual-Tone Interiors	✓		✓		✓	✓
B & C Pillar Upper Trims			✓		✓	✓
C Pillar Lower Trim (Molded)	✓		✓		✓	✓
Seat Upholstery	Vinyl		Fabric+Vinyl		Fabric+Vinyl	Fabric+Vinyl
Silver Accent Inside Door Handles			✓		✓	✓
Silver Accent on Steering Wheel					✓	✓
Silver Accent on Louvers			✓		✓	✓
Silver Accent on Center Garnish					✓	✓
Comfort						
Air Conditioner with Heater			✓		✓	✓
Power Steering			✓		✓	✓
Front Power Windows			✓		✓	✓
Central Door Locking					✓	✓
Remote Keyless Entry					✓	✓
Audio (With USB, Aux - in & Radio)					✓	✓
Smartplay Dock					✓	
Smartplay Studio - 17.78 cm						✓
Touch Screen Infotainment System						✓
Bluetooth Connectivity					✓	✓
Front Speakers (2) with Speaker Grille					✓	✓
Accessory Socket					✓	✓
Rear Parcel Tray					✓	✓
Assist Grips (Co - Dr. + Rear)	✓		✓		✓	✓
Digital Clock (In Speedometer Display)					✓	✓
Sun Visor	Dr.	Dr.+Co Dr.	Dr.+Co Dr.		Dr.+Co Dr.	Dr.+Co Dr.
RR Seat Head Rest - Integrated Type			✓		✓	✓
Remote Back Door Opener			✓		✓	✓
Internally Adjustable ORVM					✓	✓
Remote Fuel Lid Opener			✓		✓	✓
Utility						
Front Console Bottle Holder	✓		✓		✓	✓
Rear Console Bottle Holder	✓		✓		✓	✓
Front Door Trim Map Pocket (Dr.)	✓		✓		✓	✓
Front Door Trim Map Pocket (Passenger)	✓		✓		✓	✓
Safety						
Headlight Levelling	✓		✓		✓	✓
RR Seat belt ELR Type			✓		✓	✓
High-Mounted Stop Lamp	✓		✓		✓	✓
Immobiliser	✓		✓		✓	✓
Front Wiper & Washer	2 Speed		2 Speed+Intermittent		2 Speed+Intermittent	2 Speed+Intermittent
Collapsible Steering Column	✓		✓		✓	✓
Tubeless Tyres	✓		✓		✓	✓
Rear Door Child lock			✓		✓	✓
Driver Side Airbag	✓		✓		✓	✓
Passenger Airbag		✓		✓	✓	✓
Reverse Parking Sensor	✓		✓		✓	✓
ABS with EBD	✓		✓		✓	✓
Seat Belt Reminder - Dr.+ Co - Dr.	✓		✓		✓	✓
Speed Alert System	✓		✓		✓	✓

(O) - Optional safety variant

Images shown are for illustration purpose only. Colours shown may vary from actual body colours due to printing on paper. Maruti Suzuki India Limited reserves the right to change without notice, prices, colours equipment specifications and models and also to discontinue models. Accessories shown in this entire brochure are not part of the original equipment. For variant specific features, refer to equipment list.

MARUTI SUZUKI ARENA

For more details, contact Toll Free No: 1800 102 1800, 1800 1800 180

Maruti Suzuki India Limited, reserves the right to change without notice, prices, colours, equipments specifications, variants and also to discontinue models. Accessories and features shown in the pictures may not be part of standard equipment, and will differ according to the variant. For variant-specific features, refer to the equipment list. Colours shown may vary from actual body colours due to printing on paper. Images used are for illustration purposes.

MARUTI SUZUKI INDIA LTD., Plot No. 1, Nelson Mandela Road, Vasant Kunj, New Delhi 110070, Tel.011-46781000.

 MARUTI SUZUKI ARENA

New ALTO



Updated new look of Pride

The elegant new design lends a fresh appeal to the Alto, while also accentuating its distinct looks.



Dynamic New Aero Edge Design



Bumper and Side Fender

Pride of Stylish Interiors

A perfect blend of style and practicality, new Alto's upgraded interiors make it a universal favourite.



Stylish Dual Tone Interiors

Pride of Performance

The new Alto, with its peppy engine and the Factory-Fitted S-CNG Technology ensures that you get the most out of your drives.



Powerful and Fuel Efficient Engine

Pride of Technology

Make every drive memorable with features like keyless entry, power windows, Smartplay Studio with Bluetooth connectivity and more.



Smartplay Studio



Smart Reverse Parking Sensors



New Speedometer Design



Elegant New Dual Tone Dashboard



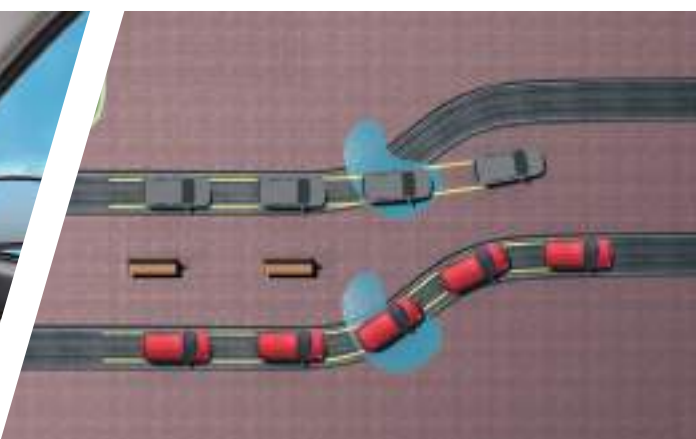
Front and Rear Console Bottle Holder



Driver + Co-driver Seat Belt Reminder



Dual Airbags for Added Safety



ABS with EBD for Enhanced Safety